

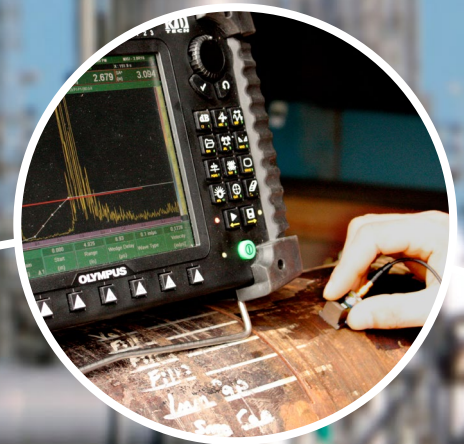
Asset Integrity Management

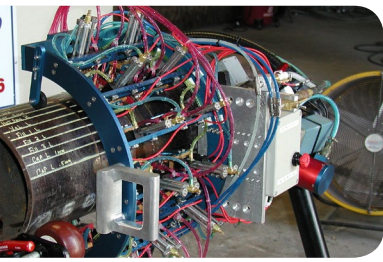


Valued Quality. Delivered.

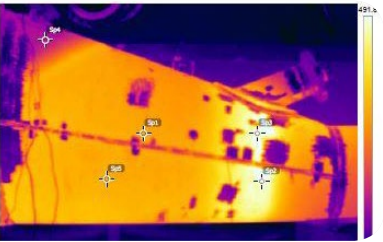
For organizations that operate, refineries, chemical plants, pipelines and terminals, power plants, utilities / civil infrastructure and manufacturing sites, maintaining and protecting their employees, the public, the environment, and operational integrity of their facilities is essential to deliver their product to end users.

Intertek's objective is to provide comprehensive Asset Integrity Management (AIM) services to support the effective management of our clients' corporate assets in order to gain maximum value. The Intertek AIM program is a comprehensive system of engineering and inspection resources that can be employed on any scale to ensure safe, compliant, and efficient operation of facilities and equipment.





Intertek's AIM group offers a comprehensive suite of services combining the understanding of materials and processes. Utilizing a detailed knowledge of inspection techniques to identify problems and the resources to carry out thorough asset evaluations, our engineering team has the expertise to provide sound recommendations. Our services can be scaled according to your needs so as to provide a tailored suite of AIM activities that protect the integrity of your industrial assets.



Audits, Gap Analysis, and Benchmarking are carried out to collect data, understand the operational threats and risks, identify gaps within the current system and benchmark operations. The results of an audit, gap analysis or benchmarking will provide specific recommendations for improving a client's program.



AWARE data management system (IDMS) – a highly versatile software tool for managing the data generated in support of a mechanical integrity program. The software can be customized for the specific data requirements of almost any asset.



Corrosion Management Strategy includes Management Documentation (strategy, policy, philosophy, procedures) as well as the development of Data Management Tools (Software) and training to meet facility requirements and industry guidelines.

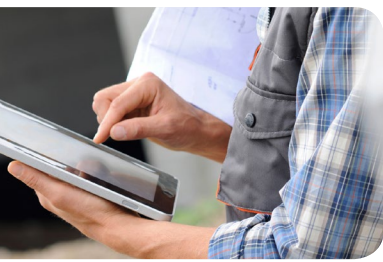
Fitness for Service Evaluations levels 1, 2 and 3 are conducted according to API 579-1/ ASME FFS-1, JUNE 5, 2007 (API 579 SECOND EDITION) and ASME Section XI guidelines.



Laser scanning, 3D modeling, and surveying services for retro-fit quality checks, ISO generation, site or route lay-out.

Mechanical Integrity Program (MIP) Services: Intertek provides mechanical integrity consulting and inspection support including:

- MIP audits, due diligence
- MIP training, written programs and procedures, implementation assistance, and fitness for service and risk evaluations
- Assurance of compliance to company specifications, codes, and OSHA/EPA requirements
- Turn-key assistance in writing and implementing workable mechanical integrity inspection programs with procedures to meet all OSHA/EPA requirements



Non-destructive testing - Full service support including automated ultrasonic testing, phased array, tube inspection and remote field testing, rope access, refractory testing and inspection.

Reliability and Risk Based Inspection (RBI) identifies the potential impact of degradation and deficiencies on an operating plant, as well as ascertaining inspection methods to mitigate these deficiencies.

For more information please visit www.intertek.com/aim or contact us at aim@intertek.com